

GetGame in the Game

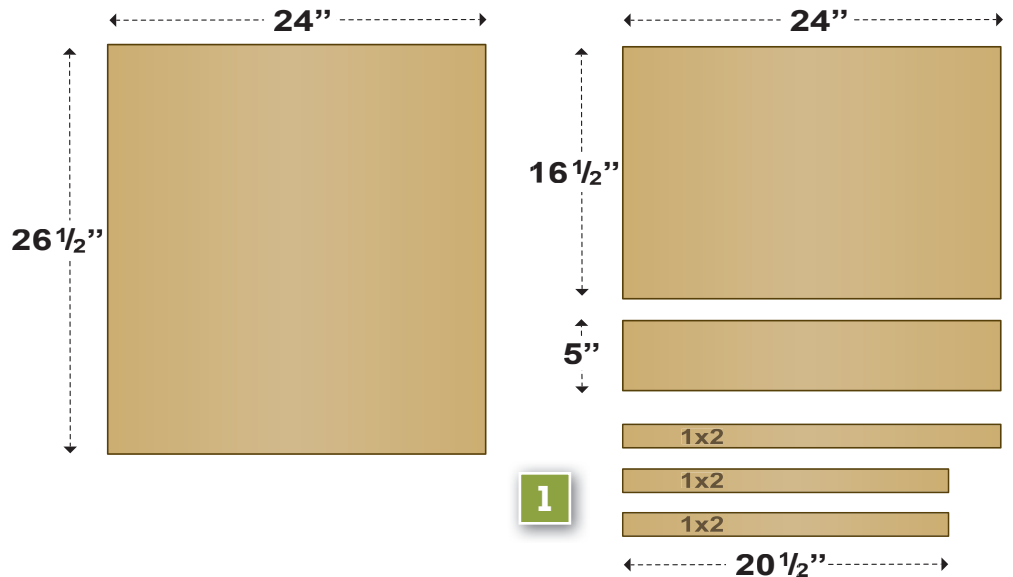
How to Build a WALL-MOUNTED BAT HOUSE

When bats lose their natural habitat, they often find refuge in artificial roosts from backyard bat houses to freeway bridges. By constructing your own, you'll provide a necessary home for bats and benefit from a drastic reduction in troublesome insects.



MATERIALS

- ¼ sheet (2' x 4') ½" AC, BC or T1-11 (outdoor grade) plywood
- One piece 1" x 2" (¾" x 1½" finished) x 8' pine (furring strip)
- 20 to 30 exterior-grade screws, 1"
- One pint dark, water-based stain, exterior grade
- 1" x 4" x 28" board for roof (optional, but highly recommended)
- Black asphalt shingles or galvanized metal (optional)
- 6 to 10 roofing nails, ⅞" (if using shingles or metal roofing)

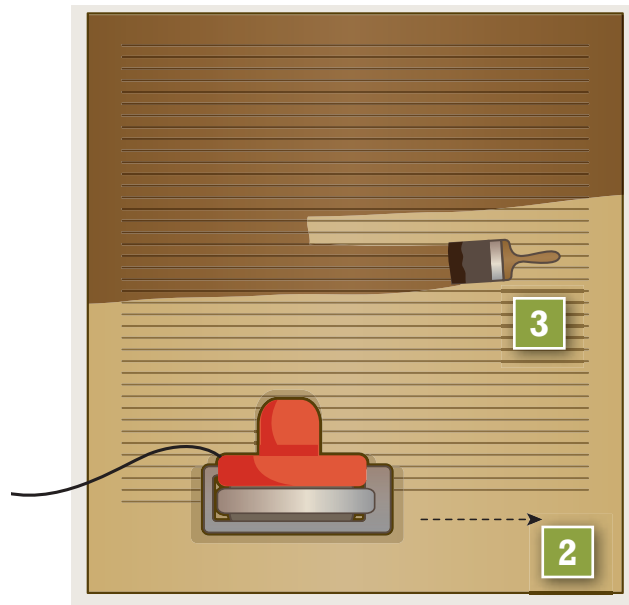


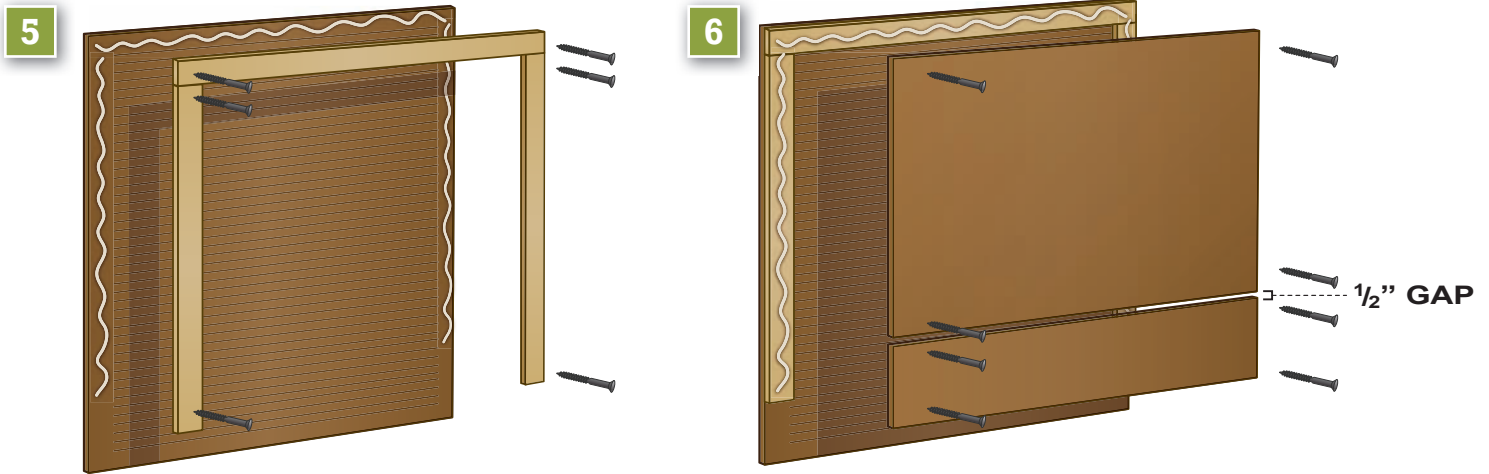
Recommended Tools:

- Table saw or handsaw
- Variable-speed reversing drill
- Screwdriver bit for drill
- Tape measure or yardstick
- Caulking gun
- Paintbrushes
- Hammer (optional)
- Tin snips (optional)

CONSTRUCTION

1. Measure and cut plywood into three pieces:
26 1/2" x 24" 16 1/2" x 24" 5" x 24"
2. Roughen inside of backboard and landing area by cutting horizontal grooves with sharp object or saw. Space grooves ¼" to ½" apart, cutting 1/32" to 1/16" deep.
3. Apply two coats of dark, water-based stain to interior surfaces. **Do not** use paint, as it will fill grooves.





4. Cut furring strip into one 24" and two 20½" pieces.
5. Attach furring strips to back, caulking first. Start with 24" piece at top. Roost chamber spacing is ¾".
6. Attach front to furring strips, top piece first (caulk first). Leave ½" vent space between top and bottom front pieces.
7. Caulk all outside joints to further seal roost chamber.
8. Attach a 1" x 4" x 28" board to the top as a roof (optional, but highly recommended).
9. Apply three coats of paint or stain to the exterior (use primer for first coat).
10. Cover roof with shingles or galvanized metal (optional).
11. Mount on building (south or east sides usually best).

Ventilation may not be necessary in cold climates. In this case, the front should be a single piece 23" long. Smaller bat houses like this one will be less successful in cool climates. However, those mounted on buildings maintain thermal stability better and are more likely to attract bats.