

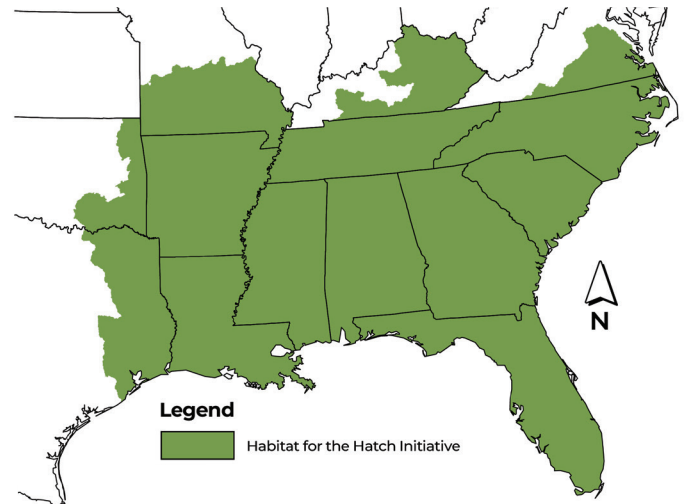


PHOTO: MONTE LOOMIS

National Wild Turkey Federation Habitat for the Hatch Acreage Reporting

The NWTF and partners will use the 10-year Habitat for the Hatch initiative to conserve and enhance our nation's forests and fields through timely and appropriate active management of quality nesting and brood habitat. Success is possible through cooperative partnerships and reliable funding sources.

In order to properly track accomplishments related to the Habitat for the Hatch Initiative, the NWTF must be consistent and diligent to ensure that all accomplishments improve nesting and brooding habitat for wild turkeys. Below are the Habitat for the Hatch objectives with guidance as to what type of activities would support each objective's accomplishment. Please note that all accomplishments must meet standards set forth in the **Save The Habitat. Save the Hunt. accomplishment reporting manual**, in addition to the additional guidance outlined below.



The Habitat for the Hatch initiative area includes all or portions of Alabama, Arkansas, Florida, Georgia, Kentucky, Louisiana, Mississippi, Missouri, North Carolina, Oklahoma, South Carolina, Tennessee, Texas and Virginia.

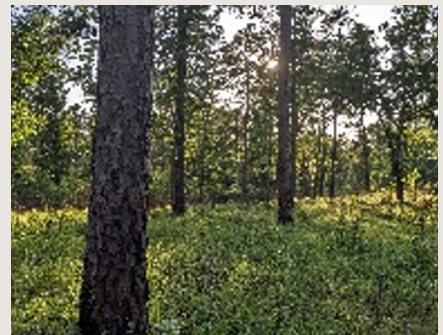
What does quality nesting and brooding habitat look like?



Quality habitat in an open field setting



Quality habitat in a hardwood setting



Quality habitat in a pine setting



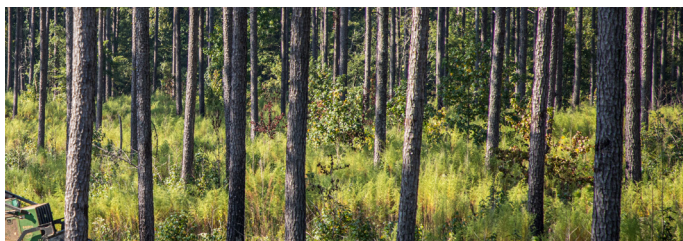
Increasing controlled burning efforts in forested systems (hardwood and pine) and fields as appropriate throughout the Southeast.

Counts

- ☒ Prescribed fire activities geared toward managing for early successional habitats.
- ☒ Create and maintain permanent fire lines that support prescribed fire activities targeted at managing early successional habitats.
- ☒ Purchase of prescribed fire equipment supporting burns targeting early successional habitat development.

Does not Count

- ☒ Prescribed fire under a closed canopy forest that does not increase sunlight levels to the forest floor.



Increasing our forest conservation footprint on private lands via technical and financial assistance.

Counts

- ☒ Implemented activities from a written management plan supporting nesting and brooding habitat.
- ☒ Implemented acres from NWTF-supported private lands financial assistance programs that support the creation of nesting and brooding habitat.
- ☒ Support of Prescribed Burn Associations and private landowner cooperatives in which burning supports early successional habitat.

Does not Count

- ☒ Influenced acres.

Increase active management of forest stands to promote early successional habitat through activities such as timber stand improvement, thinning, mastication, crop tree release, planting and more.

Counts

- ☒ Timber harvest activities that increase sunlight to the forest floor promoting early successional habitat (crop tree release, thinning, clearcut, etc.).
- ☒ Timber stand improvement activities promoting early successional habitat for nesting and brooding.

Does not Count

- ☒ Timber stand improvement activities that do not increase sunlight levels to the forest floor.



Chemical and mechanical treatment of invasive plant species.

Counts

- ☒ Treatment of invasive plant species within early successional habitat.

Does not Count

- ☒ Treatment of invasive plant species in areas that are not/ cannot be used by turkeys for nesting and brooding.
- ☒ Educating and engaging stakeholders, both direct and indirect, to raise awareness of the importance of controlled burning, active forest management and best management practices.
- ☒ Education and engagement of stakeholders will support the initiative, however accomplishments will not count towards acreage accomplishments.

Other activities not included in stated objectives.

Counts

- ☒ Planting of wildlife openings with native seeds.
- ☒ Approved seed blends sold through the seed subsidy program.

Does Not Count

- ☒ Planting of wildlife openings with unapproved non-native seeds.
- ☒ Large grains offered through conservation seed programs.